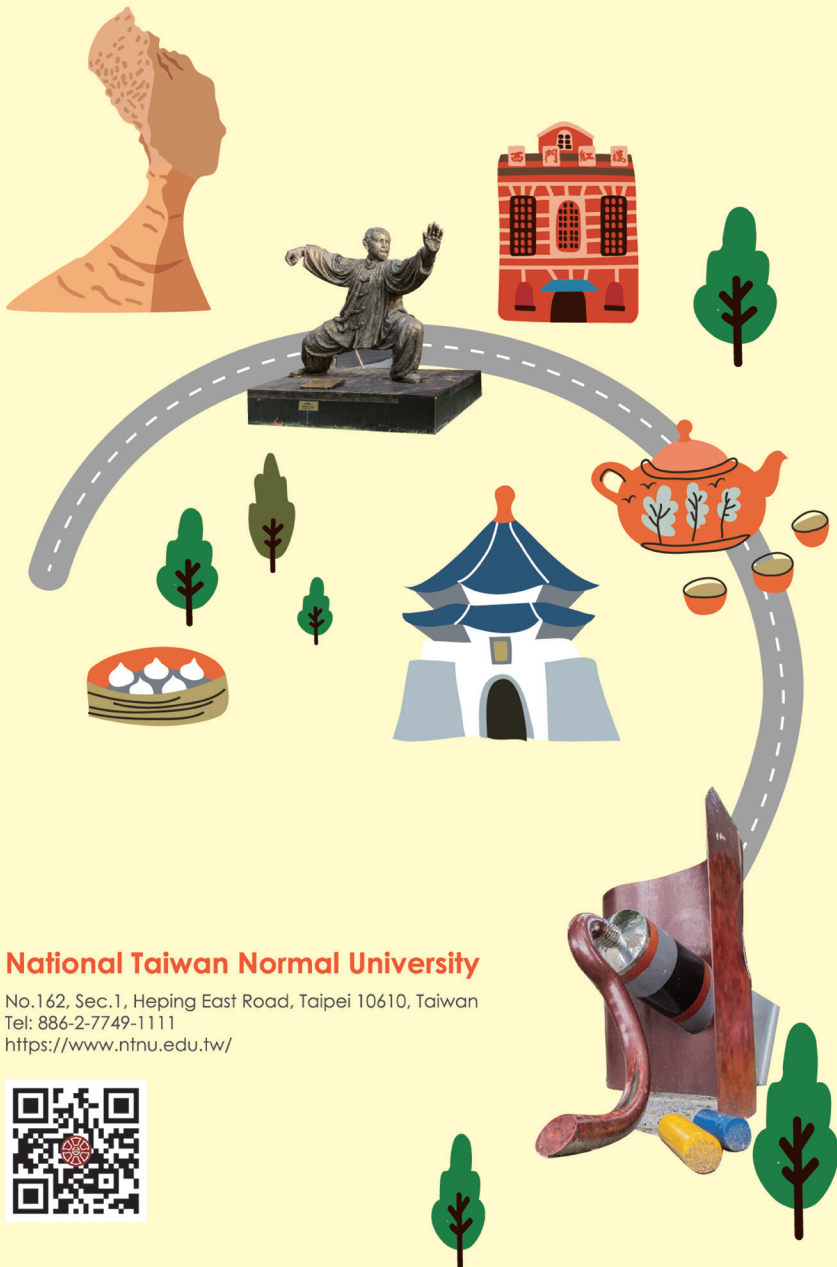




National Taiwan Normal University



National Taiwan Normal University

No.162, Sec.1, Heping East Road, Taipei 10610, Taiwan
Tel: 886-2-7749-1111
<https://www.ntnu.edu.tw/>





TAIPEI — 27th Best Student City

Taipei is a city combining all the attractions of fast-paced modern city life with the appeal of more traditional cultural elements. The diversity and friendliness make it the ideal city to study abroad.

————— (QS Best Student Cities 2022)



TAIWAN — 24th Happiest Country

- Affordable tuition and living expenses
- High standard of living
- An abundance of beautiful natural landscapes
- Chinese culture and language learning
- Plentiful academic resources

————— (World Happiness Report 2021)



NTNU Facts & Features



**in International Outlook
among Taiwanese universities**

(Times Higher Education 2022)



(QS Rankings 2022)

334 World University
Rankings

61 Asia University
Rankings



World-renowned
Mandarin Training
Center



Global Subject Rankings
(QS WUR Ranking by Subject 2022)

**Top
100**

1. Education and Training
2. Library and Information Management
3. Linguistics
4. Sports-Related Subjects



390+

partner institutions

IBO

First university in
Taiwan accredited by
the IBO (International
Baccalaureate
Organization)

Programmes of International Baccalaureate (IB) Educator Certificate:

1. International Education Programme
2. International Mathematics Education Programme
3. International Physics Education Programme
4. Chinese Language Education Programme

College of Education

Key Features



• 2022 Times Higher Education WUR Ranking by Subject

25 in Education worldwide | **5** in Education among Asia



• 2022 QS WUR Ranking by Subject

26 in Education and Training | **4** in Education among Asia
51-60 in Library and Information Management



• Flagship educational institute in Taiwan



• **30+** partner institutions worldwide



• Distinguished alumnus:

Dr. Hwa-Wei Lee | The first Asian to serve as Chief of Asian Division of the U.S. Library of Congress



Program list (• accepts international applications)

Departments/ Graduate Institutes

Bachelor

Master's

Doctoral

Education	•	•	•
Educational Psychology and Counseling	•	•	•
Adult and Continuing Education	•	•	•
Health Promotion and Health Education	•	•	•
Child and Family Science	•	•	•
Civic Education and Leadership	•	•	•
Special Education	•	•	•
Library and Information Studies		•	•
Educational Policy and Administration		•	
Curriculum and Instruction		•	•
Rehabilitation Counseling		•	
Information and Computer Education		•	•
Transdisciplinary Program in College of Education	•		
Undergraduate Program of Learning Sciences	•		

College of Liberal Arts

Key Features



• 2022 QS WUR Ranking by Subject

90
in Linguistics

101-150
in Modern Languages

182
in Arts and Humanities

151-200
in English Language and Literature
in Geography



• **1** in the humanities, law, and business fields in Taiwan (Global Views Monthly Magazine 2021)

• **1** in numbers of inbound/outbound exchange students at NTNU



• **30+** partner institutions worldwide



• Distinguished alumni:

Dr. Shu-Mei Shih

Second Vice President of American Comparative Literature Association (ACLA)

Mr. Kuei-Hsing Chang

Winner of the 2020 Dream of the Red Chamber Award



- 3 winners of the National Cultural Award
- 6 Academicians at Academia Sinica, Taiwan

Program list (• accepts international applications)

Departments/ Graduate Institutes

Bachelor **Master's** **Doctoral**

Chinese	•	•	•
English	•	•	•
History	•	•	•
Geography	•	•	•
Translation and Interpretation		•	•
Taiwan Culture, Languages and Literature	•	•	•
Taiwan History		•	

College of Science

Key Features



• 2022 QS WUR Ranking by Subject

401-450

in Chemistry
in Computer Science and Information Systems
in Physics and Astronomy

451-500

in Mathematics



• **3** researchers listed in the **World's Top 2% Scientists 2021** (Stanford University)



• **20+** partner institutions worldwide



• **Distinguished alumnus:**

Aja Shi-Jie Huang | Google Deepmind AlphaGo chief engineer



• **1** research budget at NTNU

• **1** in numbers of English-taught courses at NTNU

Program list (• accepts international applications)

Departments/ Graduate Institutes

Bachelor **Master's** **Doctoral**

Mathematics	•	•	•
Physics	•	•	•
Chemistry	•	•	•
Life Science	•	•	•
Earth Sciences	•	•	•
Computer Science and Information Engineering	•	•	•
Science Education		•	•
Sustainability Management and Environmental Education		•	•
Graduate Program of Biotechnology and Pharmaceutical Industries		•	
Undergraduate/Graduate Program of Nutrition Science	•	•	

College of Arts

Key Features



• 2022 QS WUR Ranking by Subject

151-200

in Art and Design

182

in Arts and Humanities



• Elite college in the field of art



• **20+**
partner institutions worldwide



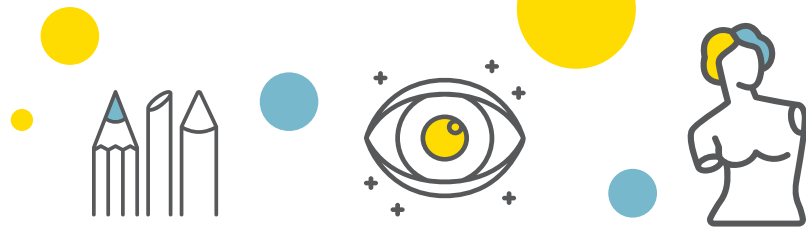
• Distinguished alumnus:

Dr. Kuo-Sung Liu

Elected foreign honorary member of the American Academy of Arts and Sciences (AAAS)



- 2 winners of the United States Society for Education through Art (USSEA) Ziegfeld Award
- 9 winners of the National Awards of Art
- 10 winners of the National Cultural Award
- 4 winners of the Arts Education Contribution Award
- Student winners in K-Design Awards and Red Dot Awards



Program list (• accepts international applications)

Departments/ Graduate Institutes

Bachelor

Master's

Doctoral

Fine Arts

•

•

•

Design

•

•

•

Art History

•



NTNU Art Museum

College of Technology and Engineering

Key Features



- 2022 QS WUR Ranking by Subject

401-450 in Engineering - Electrical and Electronic



- Certificated by IET for engineering education accreditation

• **2** IEEE fellows



- Distinguished faculty:

Prof Wen-Chung Kao | IEEE Consumer Technology Society (CTSoc) President (2023/2024)

Prof Jacky Baltes | Federation of International Sports Association (FIRA) President (2022-)

Medal-winning records

- All-around Iran FIRA RoboWorld Cup Open 2019 (AUT Cup 2019)

First -prize **Second -prize** **Third -prize**

2 **1**

- FIRA SimulCup 2021

1 **5**



- **4** researchers listed in the World's Top 2% Scientists 2021 (Stanford University)

Program list (• accepts international applications)

Departments/ Graduate Institutes

Bachelor **Master's** **Doctoral**

Industrial Education	•	•	•
Technology Application and Human Resource Development	•	•	•
Graphic Arts and Communications	•	•	
Mechatronic Engineering	•	•	•
Electrical Engineering	•	•	•
Electro-Optical Engineering	•	•	•
Undergraduate Program of Vehicle and Energy Engineering	•		
International Doctoral Program in Integrative STEM Education			•

College of Sports and Recreation



Key Features



• 2022 QS WUR Ranking by Subject

51-100 in Sports-Related Subjects | **293** in Social Sciences and Management

• **1** in physical education and athletic performance in Taiwan



• Distinguished alumni:

- Dr. Tsung-Min Hung** | International fellow of the US National Academy of Kinesiology, 2018
- Rendy Yen-Hsun Lu** | World's top tennis player
- Dr. Matt Chan** | Performance Research Scientist of Major League Baseball (MLB)

2019 World Outdoor Tug-of-War Championship



2019 World Universiade, Italy



2020 Olympics, Tokyo



2022 World Taekwondo Poomsae Championships, Korea



Program list (• accepts international applications)

Departments/Graduate Institutes

	Bachelor	Master's	Doctoral
Physical Education and Sport Sciences	•	•	•
Athletic Performance	•	•	
Sport, Leisure and Hospitality Management		•	•

College of Music



Key Features



• 2022 QS WUR Ranking by Subject

101-115 in Performing Arts | **182** in Arts and Humanity



• Distinguished alumni:

- Li Keng, world-renowned soprano**
 - 1st prize winner of the 53rd Antonin Dvorak's International Singing Competition (2018)
 - 1st Prize of the Ningbo International Vocal Competition (2018)
- Yu-An Chang**
 - Assistant Conductor to the Boston Symphony Orchestra (2018-2020)
 - Principal Conductor of the Taipei Chinese Orchestra (2022-)

- 7 winners of the National Cultural Award
- 1 Nobel Literature Laureate as Chair Professor
- 70+ alumni playing in symphony orchestras in Taiwan and overseas, including Rome Opera House, Boston Symphony Orchestra, Illinois Symphony Orchestra, and Taiwan Philharmonic
- 30+ alumni serving as faculty at domestic and foreign higher education institutions

Program list (• accepts international applications)

Departments/Graduate Institutes

	Bachelor	Master's	Doctoral
Music	•	•	•
Ethnomusicology		•	
Performing Arts	•	•	

College of Management



Key Features



• 2022 QS WUR Ranking by Subject

293 in Social Sciences and Management | **451-500** in Business and Management Studies



• **1** in the humanities, law, and business field in Taiwan (Global Views Monthly Magazine 2021)



• **20+** partner institutions worldwide

Active member of

• **AACSB&AAPBS**
(Association of Asia-Pacific Business Schools)

• **97%** employment rate within one year of graduation

- **Student Winners**
1. College Student Research Creativity Award, Ministry of Science and Technology (2021)
 2. Honorable Mention in Fintech Startup Pitch Day (2022)

Program list (• accepts international applications)

Departments/Graduate Institutes

	Bachelor	Master's	Doctoral
Business Administration Management	•	•	
Global Business and Strategy		•	

College of International Studies and Social Sciences



Key Features



• 2022 QS WUR Ranking by Subject

26 in Education and Training | **90** in Linguistics | **101-150** in Modern Languages
251-300 in Sociology | **293** in Social Sciences and Management



• **40+** partner institutions worldwide

• **1** in Taiwan & **4** worldwide
IB Educator Certificate Programme: Chinese Language Education

- Partnership with IB world schools in Taiwan and overseas
- 1 in numbers of international students at NTNU
- 1 in percentage of inbound exchange/visiting students at NTNU

Program list (• accepts international applications)

Departments/Graduate Institutes

	Bachelor	Master's	Doctoral
Chinese as a Second Language	•	•	•
East Asian Studies	•	•	•
Mass Communication		•	
International Human Resource Development		•	
Social Work		•	
European Cultures and Tourism		•	

NTNU Degree Students

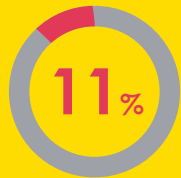
NTNU attracts **1,500+** international students from **59** countries and regions.

International students:

1,582

Total student body:

14,023

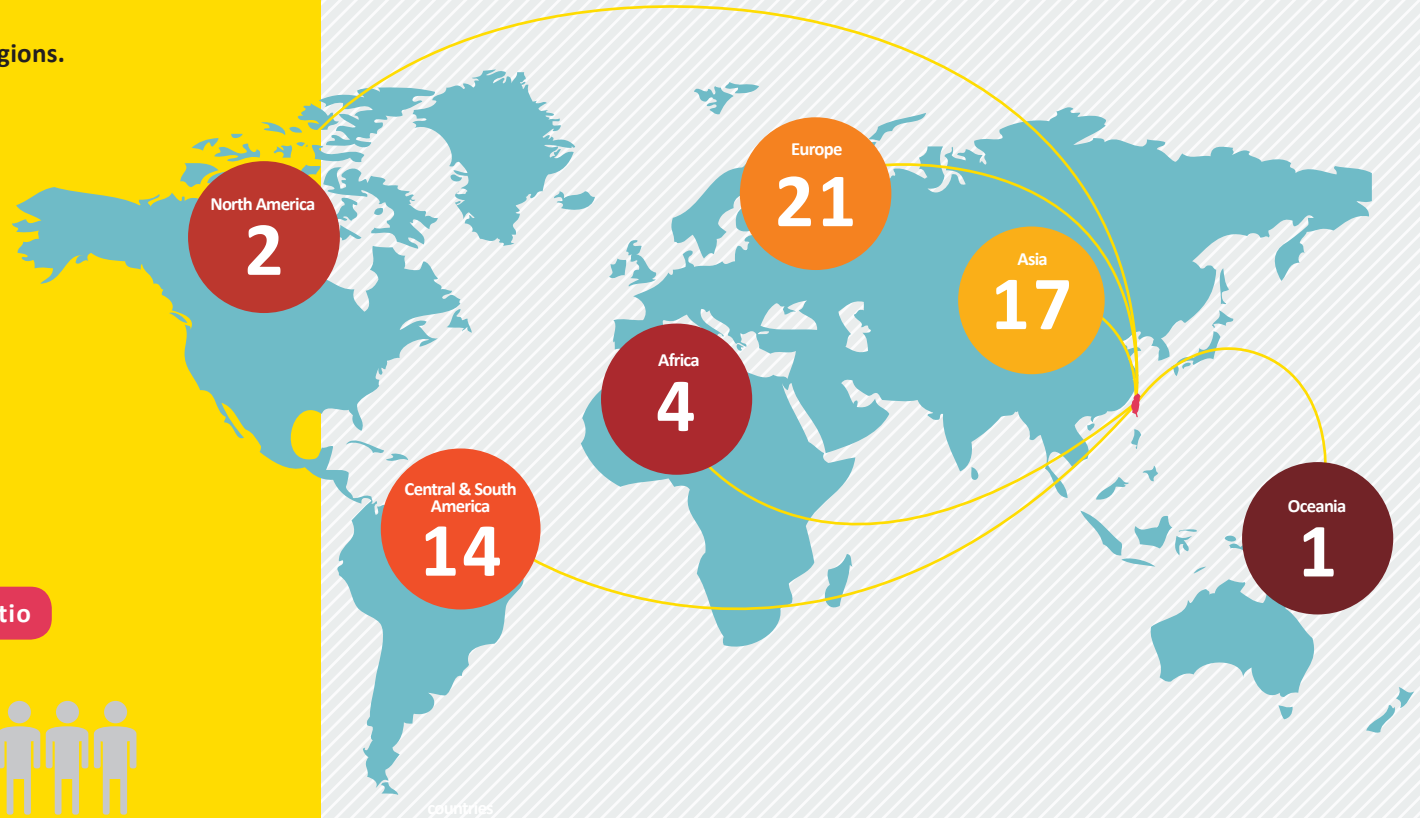


International student ratio



One out of every **9** students at NTNU is from overseas.

as of 2022



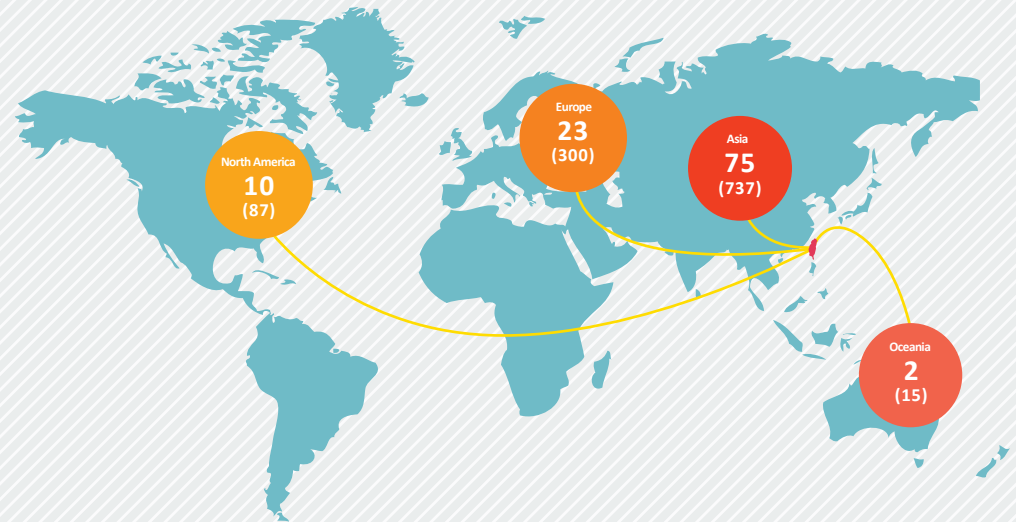
Outbound Exchange Students

Since 2017

1139 NTNU students have studied at

110 partner institutions worldwide.

Continents	Universities	Students
Asia	75	737
Europe	23	300
North America	10	87
Oceania	2	15

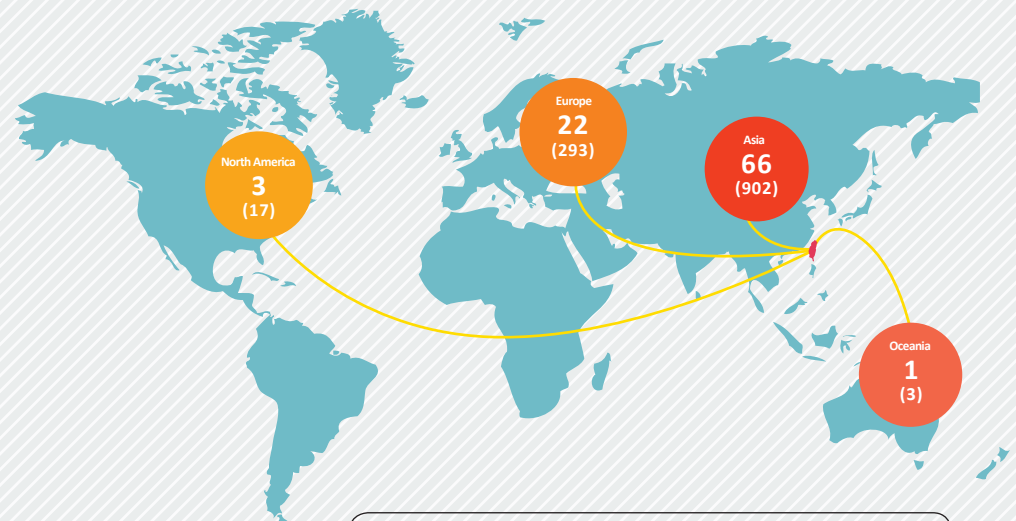


Incoming Exchange/ Visiting Students

Since 2017

1215 students from **92** partner institutions have visited NTNU.

Continents	Universities	Students
Asia	66	902
Europe	22	293
North America	3	17
Oceania	1	3



numbers of partner institutions (number of students)

Campus Events



January

Chinese New Year Party for International Students

March

Arts Festival

An annual exhibition, the NTNU Arts Festival proudly features artwork, music, photography, and theatrical productions. The festival is held on a large scale every year and offers a host of diversified activities. The festival is strongly supported by the community and is one of the most acclaimed events at NTNU.

International Cultural Festival

Our annual internationally-themed event, the International Cultural Festival brings together cultures from around the world. The festival is a chance for students to both experience and introduce different foods and traditions. With activities including Chinese song singing competitions, the Festival helps local and international students come together to experience culture at its most lively!



May

Sports Exhibition

The sports exhibition is one of our proudest traditions at NTNU. Held each year before summer break, it is the most popular sporting event held on campus. From Taekwondo to ballroom dancing, a diverse set of performances showcases the strength and grace of NTNU's athletes.

June

Anniversary/Watermelon Festival

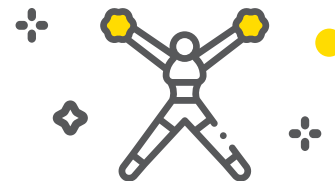
Each year on June 5, NTNU celebrates its anniversary with the Watermelon Festival. On this day, men send watermelons to women—red watermelons to express their love, yellow watermelons to show their friendship. With some students too bashful to express their affections directly, students came up with the idea of using watermelons instead, a clever play on words as a transliteration of watermelon can mean “my fair lady.”

September

Welcome Party for International Students

November

Sports Day



International Degree Students Application

Semester	Application Period	Admission Decisions	Semester Begins	Semester Ends
Fall Semester (1 st Semester)	October – mid-January	April	September	January
Spring Semester (2nd Semester)	June - July	October	February	June

* If different, please follow the dates published in the Admission Prospectus.

- Summer break: late-June to August
- Winter break: mid-January to mid-February
- Online application only. For admission prospectus download, application eligibility, admission procedures, and individual program requirements, please refer to the NTNU application website: <https://bds.oia.ntnu.edu.tw/bds/apply>



Scholarship Opportunities for Degree-Seeking International Students

Taiwan Scholarship

Please contact the nearest ROC diplomatic mission in your home country for information on fees & funding, application eligibility, and application methods

<https://taiwanscholarship.moe.gov.tw/>

NTNU International Students Scholarship

Fees & Funding

Full Tuition Waiver
 Bachelor's program: 1 year
 Master's program: 2 years
 Doctoral program: 3 years
 (For second & third year, Master's or Doctoral students should be recommended by their departments or institutes.)

Eligibility

Students seeking admission to NTNU degree programs as first-year students and those who have not been awarded any scholarship by organizations of the Taiwan government.

Application

New students should apply for the scholarship while applying for NTNU admission. The application deadline for the scholarship is the same as the deadline for admission applications.

<https://www.ntnu.edu.tw/oia/scholarship.php>

Campus Life and Student Support

4.0 ★★★★★☆

General study experience at NTNU

4.5 ★★★★★☆

International degree student life counseling (Office of International Affairs)

4.1 ★★★★★☆

Library (#2 largest library collection in Taiwan)

4.0 ★★★★★☆

Language support (Chinese courses for international students, one-on-one tutorials)

4.0 ★★★★★☆

Information support

3.9 ★★★★★☆

Sports facilities (swimming pool and other sports facilities and spaces)

3.7 ★★★★★☆

Dormitories

(Resource: satisfaction surveys of 560 international students)

☆☆☆☆☆ (1 to 5: from least to most satisfactory)

Tuition and Other Miscellaneous Fees

Tuition for International Students (approx. annual rate)

Programs	Tuition Fees
Undergraduate programs	3,200-3,800 USD
Graduate programs	

Other Miscellaneous Fees for International Students (approx. annual rate)

Items	Fees
Insurance Fee	Health Insurance 200-300 USD Compulsory Insurance 15 USD
Computer and Network Facilities Fee	40 USD
On-Campus Dormitory (Utilities not included)	500-1,600 USD
Off-Campus Housing (Individual rooms)	270 USD and up/per month
Living Expenses	300-350 USD/per month

•For more details, please refer to: <http://www.aa.ntnu.edu.tw/en>

•Exchange Rate: 1 USD = 30 NTD

Come and join us at NTNU!

Taiwan has **beautiful nature** with impressive hills and lots of green even in the middle of the capital city. **Taiwanese people are very friendly** and willing to help in any situation and local food is just delicious!

– Kateřina Sychrová, exchange student from the Czech Republic



NTNU is located between **MRT stations** and can be reached quite conveniently. The area around the university is amazing. There is a **night market** just a few minutes away from NTNU with lots of good food, interesting shops, clothing stores and much more.

– Antonia Müller, exchange student from Germany



Through the activities of NTNU's clubs, I have met friends who come from a wide range of departments and universities. If you have the time and energy, I strongly recommend joining a club. **The clubs really add to the quality of student life at NTNU.**

– Koichiro Toda from Japan, student at the Institute of Taiwan History



NTNU has **a great student library with lot of resources**, including lots of online material. It is a great environment for those long study days and has been extremely helpful in my research.

– Jose Salomon Nazar Villalta from Honduras, student at the Institute of International Human Resource Development



Here you will find **an assembly of different ideas on education, as well as passionate and driven students**. Students help one another and share valuable experiences. I have met people from all walks of life who are just as committed to education as myself. In the process, I have also seen abundant professional growth.

– Tien-Jun Lim from Malaysia, student at the Institute of Curriculum and Instruction



The combination of lectures and research is extremely useful for students coming from different educational backgrounds and cultures in helping them complete their studies. Courses that are up to date, taught by excellent professors, and supported by adequate facilities have been the rule rather than the exception during my studies here.

– Bevo Wahono from Indonesia, student at the Institute of Science Education



Chinese Learning— NTNU Mandarin Training Center (MTC)

- A wide variety of class levels and programs are offered: seasonal programs, short-term programs, summer camps for young learners, MTC online learning, and elective language and culture courses.
- Scholarship opportunities: Taiwan Scholarship, Huayu Enrichment Scholarship (HES) and MTC scholarships.

Seasonal Program Dates, Application Deadline, and Tuition (1 USD = 30 NTD)

Term	Dates	Application Deadline		Tuition		
		Need a Visa*	No Need for Visa**	Regular Class	Intensive Class	Customized Class
Spring	Mar. 1-May 31	Jan. 15	Feb. 14			
Summer	Jun. 1-Aug. 31	Apr. 15	May 14	720 USD	960 USD	Please contact MTC for organizing customized classes
Fall	Sep. 1-Nov. 30	Jul. 15	Aug. 15	970 USD	1,320 USD	
Winter	Dec. 1-Feb. 28	Oct. 15	Nov. 15			
Two-month Summer Session	Jul. 1-Aug. 31	May 15	Jun. 15	480 USD	640 USD	
				650 USD	880 USD	

* Schedule are subject to change; tuition will vary based on the chosen class types.

* For applicants who require documentation in order to apply for a visa, we recommend that all application materials be sent and received by the scheduled deadlines. Admission letters are mailed via regular airmail and require time to reach applicants.

** Admission letters will be emailed to applicants who are foreign nationals eligible for a 90-day visa exempt entry, or who have proof of legal residency in Taiwan (or who hold Alien Resident Certificates).

Other Fees for Reference

Items	Approx. Costs
Registration Fee (For first time students)	83 USD
Mandatory Accidental Insurance Fee (The fee will be waived for students who present a proof of coverage under other accidental insurance plans)	9-12 USD (2 or 3 months)
Textbooks and other study materials	50-60 USD per term

Discover a New You and Meet the World at NTNU!

Degree Program Admission and Scholarship/ Office of International Affairs

Email: intlntnu@ntnu.edu.tw

Tel: 886-2-7749-1272

Website: <https://bds.oia.ntnu.edu.tw/bds/apply>



Exchange and Visiting Students/ Office of International Affairs

Email: govisiting@ntnu.edu.tw

Tel: 886-2-7749-1269

Website:

Exchange: <https://bds.oia.ntnu.edu.tw/bds/IE>

Visiting: <https://bds.oia.ntnu.edu.tw/bds/VS>



Chinese Learning/Mandarin Training Center

Email: mtc@mtc.ntnu.edu.tw

Tel: 886-2-7749-5130

Website: <https://mtc.ntnu.edu.tw/>



Main Campus (Heping Campus)

No.162, Sec. 1, Heping East Road, Taipei 10610

Airport - Main Campus

"National Taiwan Normal University" stop

Guting Station, Exit4

