

Join Ewha's International Summer Experience!



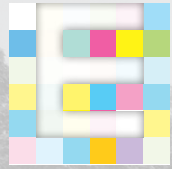
2013 EWHA INTERNATIONAL SUMMER COLLEGE



Session 1 June 25(Tue) – July 24(Wed), 2013 (Application Deadline May 15, 2013)

Session 2 August 7(Wed) – August 21(Wed), 2013 (Application Deadline July 3, 2013)

INTRODUCTION TO EWHA



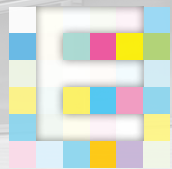
Ewha Womans University was founded in 1886 as Korea's first educational institution for women. It has since grown to become one of Asia's most prestigious universities, offering more than 60 undergraduate majors and 65 master's and doctoral programs to women, as well as a number of co-educational exchange, summer, and short-term programs.

As a comprehensive research university, Ewha has 11 colleges and 15 graduate schools and over 300 courses taught in English every semester. The university's many internationally-recognized research institutes encompass both traditional areas of strength - law, humanities, and education - as well as new areas of excellence - science, technology, engineering, women's studies, international studies, and Korean studies, and carry out research collaborations with partner universities worldwide.

With 25,000 students and 190,000 alumni, Ewha has a strong presence around the world and works hard to live up to its global reputation. The university is proud of its long history at the forefront of education in Korea and is determined to train tomorrow's leaders, equipping them with the skills and knowledge to make a difference in the world. In the 21st century, Ewha has become a truly global place to study and research, and to experience life in Korea.

SUMMER @ EWHA

Celebrating 43 Years of Academic Excellence:
Ewha International Co-ed Summer College (Ewha ICSC), 1971-2013



**Concentration on
East Asian Studies / Korean Studies / Women's Studies / Music & Arts**

The Ewha International Co-ed Summer College is Korea's oldest international co-ed summer program. Now in its 43rd year, Ewha ICSC brings together an incredibly diverse group of students to experience the best of Korea through academic study and cultural immersion. With unrivaled academic excellence and an international student body, Ewha is the place to experience authentic Korean university life.

Well-known for its strong academic programs, Ewha ICSC offers courses providing core knowledge in Korean studies, women's studies, international studies, fine arts, business and economics, humanities, and more. Courses are taught by leading faculty from Ewha and top universities abroad, and during the program students participate in a variety of hands-on field trips that complement their learning, all while experiencing the exciting student life on campus and in Sinchon, Korea's most vibrant student neighborhood.



SESSION I

■ June 25 (Tuesday) – July 24 (Wednesday), 2013

Session I is a month-long program designed for globally-minded students who desire to pursue both academic and cultural endeavors. Academically, Ewha's summer program is renowned for its dedicated and experienced professors, not to mention a broad array of courses on offer that provide students with effective learning opportunities in many disciplines.

During the program students take exciting hands-on field trips in and out of Seoul that allow them glimpses into the tradition and everyday life of Korea.



ACADEMICS

1. Courses

Students choose 2 courses from the 3 categories below to earn 6 credits. Although most institutions outside Korea accept credits earned at Ewha ICSC, students are recommended to check with an international program officer in their home institution before applying.

Credits: Each course is 3 credits and students must take 2 courses to be enrolled full-time.

Category I: Academic Courses Taught in English

- Around 30 courses on Korean Studies, East Asian Studies, Women's Studies, Music, Art & Design, North Korean Studies & other disciplines

Category II: Korean Language Courses

- Four levels of Korean from Basic to High Advanced

Category III: Academic Courses Taught in Korean

- Around 200 courses on Humanities, Arts & Sciences, Sociology, Foreign Languages, Architecture, Engineering, Arts & Design, Business, International Studies, Law, Natural Sciences, and more

2. Faculty

Ewha ICSC is distinguished by its prominent faculty at the top of their fields of research, who come to teach in the programs from world-renowned universities. A partial list of the home institutions of 2013 faculty includes:

- Ewha Womans University, Seoul, Korea · Brooklyn College – City University of New York, NY, USA
- Fairleigh Dickinson University, NJ, USA · Indiana University Bloomington, IN, USA
- New York University, NY, USA · Oriental Studies University of Naples, Naples, Italy
- Princeton University, NJ, USA · Southern Methodist University, TX, USA
- University of Central Lancashire, Lancashire, UK · University of Evansville, IN, USA
- University of Hawai'i at Manoa, HI, USA · University of Oklahoma, OK, USA · Western Carolina University, NC, USA
- Wheaton College, IL, USA · Yale University, CT, USA

3. Timetable

Every student should take one AM and one PM (either PM 1 or PM 2) course to be enrolled full time.

Day	Track	Time
Monday - Thursday	AM: Category I & III	09:00 - 11:30
	PM 1: Category I & III	12:30 - 15:00
	PM 2: Category II (Korean Language Courses)	14:00 - 17:00
Friday	Field Trips & Cultural Excursions	

4. List of Courses

Category I:

Music, Art & Design

- Art in Seoul · Korean Ceramics (Studio-Type) · Traditional Korean Music (Studio-Type) · Traditional Korean Painting (Studio-Type)

East Asian Studies

- East Asian Economies · East Asian History · Elections and Party Politics · People and Cultures of East Asia
- Politics in Korea and East Asia · Religions of East Asia

Korean Studies

- Contemporary Korean Cinema · Introduction to Contemporary Architecture in Seoul
- Introduction to Korean Media and Culture · Introduction to Premodern History of Korea
- Korean Art History · Korean Waves in a Global Context · Media and Urban Spectacle in Seoul
- Modern Korean History · Popular Culture and Life in Contemporary Korea
- The Writing of Place: The Life and Culture of Korean

Women's Studies

- Gender Relations in Korea · Daily Life History of Korean Women · Same-sex Desire in East Asian Literatures

North Korean Studies

- Cultural Contents in North Korea · Everyday Life in North Korea International · Relations of North Korea with East Asian Countries

Others

- Cross-Cultural Psychology · International Advertising · Introduction to Advertising
- Introduction to Psychology · Introduction to Public Relations · Management Accounting

/Note: * The above courses are subject to change without prior notice.

* Course syllabi are available on the Ewha ICSC webpage: <http://summer.ewha.ac.kr/>

Category II: Korean Language

- Level 1 (Basic) · Level 2 (Intermediate) · Level 3 (Advanced) · Level 4 (High Advanced)

/Note: * Korean Language Courses are offered in the afternoon only.

* Students are required to take the Korean Language Level Test for placement in the appropriate class.

Category III: Students may enroll in courses conducted in Korean if they are fluent in both spoken and written Korean. To access courses offered in Korean, please visit Ewha's website at <http://www.ewha.ac.kr> and click on "학사정보" (Academic Resources).

/Note: * Some courses are restricted to specific majors only. / Approximately 200 courses, all taught in Korean, are offered.

5. Grading Policy

For most courses, there will be a mid-term exam, a final exam and regular homework assignments. Exams will take place during normal class time and the content will be determined by the professor. Grading is on an 'A+' to 'F' scale and students will be graded based on their performance, not on a curve. If students miss more than 2 classes without evidence and an acceptable reason, they will receive an 'F' in the class.

Grade	GPA	Grade	GPA	Grade	GPA
A+	4.3	A ⁰	4.0	A-	3.7
B+	3.3	B ⁰	3.0	B-	2.7
C+	2.3	C ⁰	2.0	C-	1.7
D+	1.3	D ⁰	1.0	D-	0.7
F	0	-	-	-	-

SESSION II

■ August 7(Wednesday) – August 21(Wednesday), 2013

“2013 Introductory Korean Studies” is a two-week program designed to provide students with an enriching opportunity to learn about and experience Korean culture, language, and history. Students in Session II participate in a pre-determined academic program and engage in hands-on learning through field trips and cultural excursions to places rich in traditional and contemporary Korean culture.



ACADEMICS

1. Courses and Credits

Session II features a pre-determined academic program and numerous field trips and cultural excursions.

Upon successful completion, students will earn 3 academic credits.

Korean Language Courses

- Level 1 (Basic) / Level 2 (Intermediate) / Level 3 (Advanced)

Special Lectures

-Korean Architecture / Korean Cinema / Korean Economy: Chaebol / Korean History / Korean Pop Culture / Korean Food (Studio-Type) / Traditional Korean Music (Studio-Type) / Traditional Korean Art (Studio-Type)

Half Day Field Trips

- National Museum of Korea / Korean Cinema / Korean Theater / The Story of King Sejong / Gyeongbok Palace

The Special Cultural Excursion Trip

An overnight trip to Hahoe Folk Village in Andong City takes place on the first weekend of the program, enabling students experience authentic Korean traditional culture and life through the following activities:

Making traditional Korean paper art / Staying in a traditional Korean-style home / Watching a traditional mask dance / Attending a traditional music performance / Tasting traditional Andong cuisine

/Note: Schedule and courses are subject to change without prior notice.

2. Timetable

Day	AM (09:00 - 12:00)	PM (13:30 - 16:30)
Monday - Thursday	Korean Language Courses	Special Lectures or Half-day Field Trips
Friday - Saturday	Special Cultural Excursion Trip: 2 Days & 1 Night at Hahoe Folk Village in Andong City	



SCHOLARSHIPS



Ewha ICSC Excellence Award

Full tuition and application fee waiver for 2 students (Session I only)

Students whose cumulative GPA is above B are eligible to apply.

Ewha ICSC-EWUACNA

(Ewha Womans University United Alumnae Chapters of North America),

Washington DC Chapter Scholarship

(<http://www.ewhadcchapter.org>)

Full tuition, application fee, field trip and accommodation support for 2 students (Session I only)

The Washington, DC Chapter of EWUACNA scholarship supports both foreign nationals and Korean nationals currently residing in the USA who wish to study in the Ewha ICSC.

Gloria Hahn Memorial Scholarship

Full tuition and application fee support for 1 student (Session I only)

Dr. Richard Hahn established this memorial scholarship for his wife, Kim Ronyoung (Mrs. Gloria Hahn) in 1988. Mrs. Hahn is the author of "Clay Walls", the first novel written by a Korean-American about Korean immigrants to the USA during the early 20th century.

Korea Adoptee Fellowship at Ewha (KAFF)

Full tuition and application fee support for 2 students (Session I only)

The Korean Adoptee Fellowship at Ewha (KAFF) assists overseas Korean adopted students in learning about their motherland through academic study and cross-cultural experiences. Korean adoptee students are eligible to apply.



Early Bird Registration Scholarship

20% tuition fee discount: 550,000 KRW for Session I

10% tuition fee discount: 158,000 KRW for Session II

This scholarship is automatically available to students who complete the total application process, including submission of the online application and payment of the application fee and tuition fee, by March 27, 2013 for Session I and May 22, 2013 for Session II.

Ewha Alumnae Scholarship

10% tuition fee discount: 275,000 KRW for Session I & 158,000 KRW for Session II

Students whose mother or grandmother is a graduate of Ewha are eligible to apply.

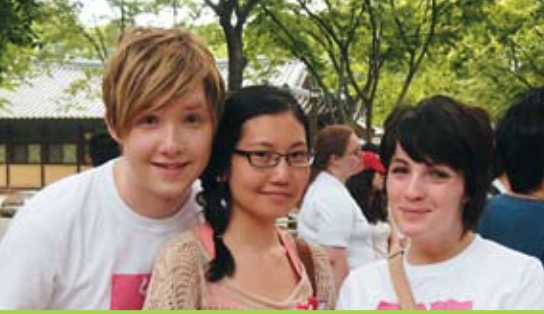
Re-enrolling Student Scholarship

50% tuition fee discount: 1,375,000 KRW for Session I

50% tuition fee discount: 790,000 KRW for Session II

All students who have attended Ewha ICSC programs in the past are eligible to apply.

/Note: * Students from partner schools with tuition waivers are not eligible to apply for the above scholarships.
* Please check the Ewha ICSC website's scholarship page for further information.



2013 EWHA INTERNATIONAL SUMMER COLLEGE



Session I | June 25 – July 24, 2013

Session II | August 7 – August 21, 2013



2012 Ewha International Summer College

FIELD TRIPS & CULTURAL EXCURSIONS

Every weekend, program coordinators will accompany students on exciting, hands-on field trips to places which offer opportunities to experience and understand the tradition and culture of contemporary Seoul. Students in Session I will visit the Korean Folk Village, the Demilitarized Zone (DMZ), Everland, the House of Sharing (Shelter for Former War Sex Slaves), and see a B-boy performance, as well as experience cooking Korean food.

Students in Session II will experience authentic Korean culture through a 'Special Excursion Trip' to Andong City. Students will benefit from various hands-on experiences including learning the traditional mask dance (Talchoom), making beautiful artwork using traditional Korean paper (Hanji), sampling delicious Andong cuisine, and enjoying the wonders of one of Korea's world heritage sites.

For a taste of modern Korea, students will visit a major TV broadcasting company, see a nonverbal Korean performance, visit a Korean movie theater, and more!

PEACE BUDDIES

Professional Ewhaians At Cultural Exchange

Ewha ICSC students will be in contact with Ewha PEACE Buddies, a volunteer group of Ewha undergraduate students, for the duration of Ewha ICSC programs, from their arrival at Incheon airport until the 'Farewell Ceremony' at the program close. As students of Ewha, PEACE Buddies introduce international students to the campus and community, arrange special events, and help program participants take full advantage of life at Ewha and in Korea.

Questions concerning everyday life at Ewha and extra-curricular activities organized by PEACE Buddies should be sent to: ewhapeacebuddy@gmail.com. Each Ewha ICSC student will receive an email from his or her designated PEACE Buddy prior to the program start date.

ACCOMMODATION

On-campus Housing

The International House (I-House) and Graduate Student Dormitory (GSD) are on-campus housing facilities located very close to the Ewha ICSC office in the Ewha Campus Complex (ECC). These state-of-the-art housing facilities for foreign students offer double and single rooms on a 'first-come-first-served' basis. The dormitories are co-ed, with each floor assigned to a single sex.

1. Information

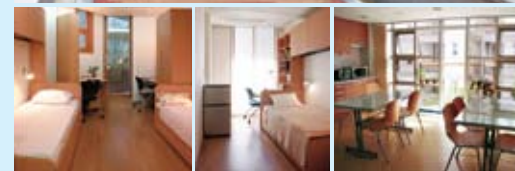
	I-House	GSD
Homepage	http://housing.ewha.ac.kr	
Contact Info	Tel: +82-2-3277-6005 Fax: +82-2-3277-6004	Tel: +82-2-3277-6002 Fax: +82-2-3277-6003
E-mail	ihouse@ewha.ac.kr	dmtrygr@ewha.ac.kr

2. Official Check-In & Check-Out Dates

	Session I	Session II
Check-In	June 24 (Monday)	August 6 (Tuesday)
Check-Out	July 25 (Thursday)	August 22 (Thursday)

Note: * Single or double rooms are available on a 'first-come-first-served' basis according to date of completion of application submission and mandatory fee payment.

* Students who wish to extend their dorm stay should contact Ewha's Housing Coordinator at ihouse@ewha.ac.kr.



ACADEMIC CALENDAR

● Session I

- **Application Deadline** (course registration included)
May 15 (Wednesday)
- **Fee Payment Deadline**
May 15 (Wednesday)
- **'Early Bird' Registration Privilege Deadline**
March 27 (Wednesday)
- **Official Dorm Check-In Date**
June 24 (Monday)
- **Welcoming Ceremony & Orientation**
June 25 (Tuesday)
- **Course Commencement**
June 26 (Wednesday)
- **Farewell Ceremony**
July 24 (Wednesday)
- **Official Dorm Check-Out Date**
July 25 (Thursday)

● Session II

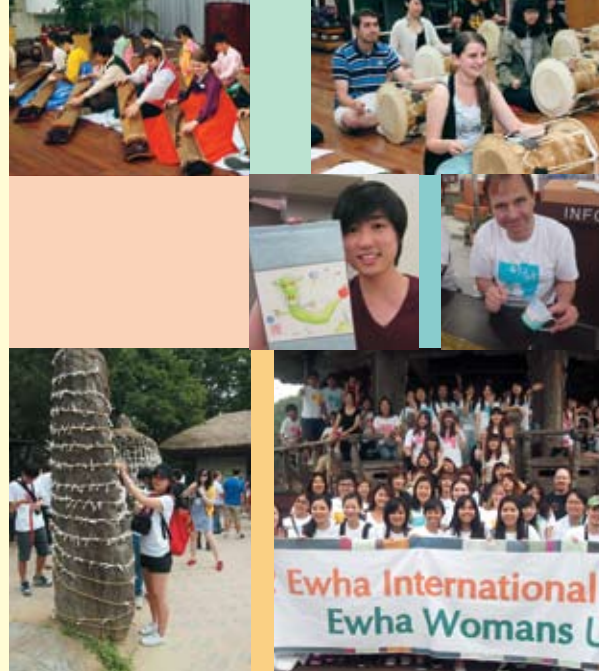
- **Application Deadline** (course registration included)
July 3 (Wednesday)
- **Fee Payment Deadline**
July 3 (Wednesday)
- **'Early Bird' Registration Privilege Deadline**
May 22 (Wednesday)
- **Official Dorm Check-In Date**
August 6 (Tuesday)
- **Welcoming Ceremony & Orientation**
August 7 (Wednesday)
- **Course Commencement**
August 8 (Thursday)
- **Special Cultural Excursion Trip**
August 9 (Friday) – 10 (Saturday)
- **Farewell Ceremony**
August 21 (Wednesday)
- **Official Dorm Check-Out Date**
August 22 (Thursday)



FEES

All fees must be paid in Korean won. Students transferring foreign currencies should take into account the exchange rate of the day, including bank commission.

The fees can be electronically wired to the bank account listed below. The sender's name must be identical to the applicant's name. Please notify the Ewha ICSC office in advance via email if the payment is sent under another name.



Session I

Detail	Mandatory Fees		Optional Fees (Housing)	
	Application Fee (Non-refundable)	Tuition Fee	I-House / GSD	
Amount (Korean Won)	100,000	2,750,000	Single 680,000	Double 514,000
Deadline	May 15 (Wednesday)		June 28 (Friday)	

Note: * The above dormitory fees are subject to change.

Session II

Detail	Mandatory Fees		Optional Fees (Housing)	
	Application Fee (Non-refundable)	Tuition Fee	I-House / GSD	
Amount (Korean Won)	100,000	1,580,000	Single 492,000	Double 372,000
Deadline	July 3 (Wednesday)		August 9 (Friday)	

Note: * The above dormitory fees are subject to change.

Wire Transfer Information

Bank	Shinhan Bank (Ewha Branch), Seoul, Korea
Account Number	100-016-709917
Account Holder	Ewha Womans University
Bank Swift Code	SHBKKRSE

Note: * Please pay any optional fees in cash at an on-campus Shinhan Bank upon arrival at Ewha.
 * There will be a 30,000 KRW late fee to those who pay after the deadline.
 * Personal checks or credit cards will not be accepted.

APPLICATION

Online application at
<http://summer.ewha.ac.kr/>

The Ewha ICSC welcomes undergraduate and graduate students who wish to discover Korea through intensive academic studies and diverse cross-cultural experiences. The programs are open to international undergraduate and graduate students as well as Ewha students. Complete applications, including supporting documents, must be submitted online by **May 15 (Wednesday), 2013** for Session I and **July 3 (Wednesday), 2013** for Session II.

Eligibility

- Current undergraduate and graduate students.
- Students who will begin undergraduate studies in fall 2013 are also eligible to apply.

Required Documents

Applications are accepted online only. Students must submit the following materials:

- **Face Picture (3 cm X 4 cm) in jpg File Format**
- **Scanned Copy of College or University Enrollment or Transcript***
- **Scanned Copy of Passport Bio-Page**
- **Scanned Copy of Overseas Traveler's Health Insurance****

* Proof of enrollment confirming the student's university or college attendance, or proof of admission to university or college for fall 2013.

** Copy of Overseas Traveler's Health Insurance covering any incidents or medical emergencies that may occur during the student's participation in the 2013 Ewha ICSC.

Visa

Please visit the nearest embassy or consulate of the Republic of Korea in your home country for accurate information. Please note that foreign nationals participating in short study abroad programs such as the Ewha International Co-ed Summer College are able to stay in Korea for a maximum of 90 days without a visa.





2013 EWHA INTERNATIONAL CO-ED SUMMER COLLEGE

ECC B334, Ewha Womans University, 52 Ewhayeodae-gil, Seodaemun-gu, Seoul 120-750 Korea

Tel 82-2-3277-3160, 3161 **Fax** 82-2-364-8019 **Email** gosummer@ewha.ac.kr

Homepage <http://summer.ewha.ac.kr> **Official Facebook Page** <http://www.facebook.com/ewhasummer>

Ewha,
Where Change Begins



이화여자대학교
EWHHA WOMANS UNIVERSITY