



HANYANG UNIVERSITY

HANYANG INTERNATIONAL WINTER SCHOOL

Office of International Affairs | The HIWS Team

hanyangwinter.com / winterschool@hanyang.ac.kr / +82-2-2220-2453

Introduction to Hanyang



1939

Dr. Lyun-joon Kim
established Dong-A
Engineering Institute
in Seoul



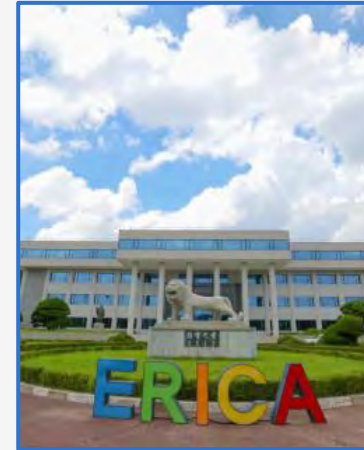
1948

Dr. Lyun-joon Kim
established Dong-A
Engineering Institute
in Seoul



1959

HY Engineering College is
elevated to a comprehensi
ve university



1979

Hanyang opens its 2nd
campus, the ERICA campus
in Ansan city



2025

Hanyang University
celebrates its
86th anniversary

Hanyang is continuing to look toward the future with a broad vision and bold strategies.
By producing new generations of leaders for the 4th Industrial Revolution era,
the university seeks to actively contribute to creating a better tomorrow.

Introduction to Hanyang

Seoul, the Capital of Korea

Located in the center of Seoul

Navigate to tourist spots by subway easily

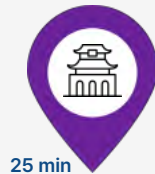
Transportation Hub

Line No. 2

Bundang Line

Line No. 5

Jungang Line



25 min

Palaces



5 min

Seongsu
Café Street



10 min

Seoul
Forest





SEONGSU VIBES





#SEONGSU VIBES

Located just 5 minutes by subway or a 20-minute walk from Hanyang University,
the area offers everything trendy – from Seoul Forest and SM's Kwangya
to cozy cafés, stylish boutiques, and pop-up stores, all just around the corner.

HANYANG INTERNATIONAL WINTER SCHOOL (SESSION A/B)

HAN
YANG
UNIVER
SITY

#BestWinterEver

#Dopamine_Seoul

#One Seoul, Forever in your youth, at Hanyang



What HIWS Provides

Exclusive Courses

Only at Hanyang

Take up to **TWO courses** and earn **5 credits** — from major requirements to K-culture, arts, and lifestyle **HANDS-ON** elective like Korean cinema, Dance, and Taekwondo

What HIWS Provides

CLUB Activities

20 types of WINTER Tours led by local friends to explore Seoul like a local through cooking classes, sports matches, one-day trips to hidden gems around the city **for FREE, EVERYDAY!**





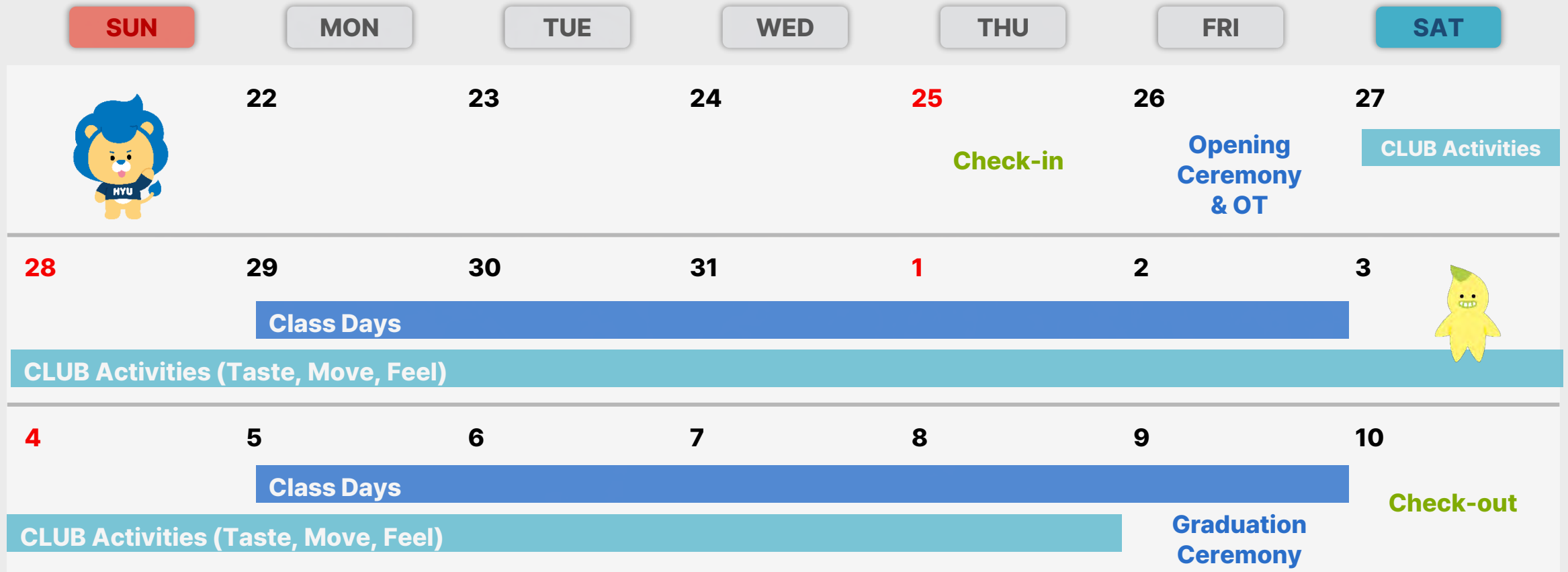
What HIWS Provides **VIBES** Networking

+3,700

Participants per year

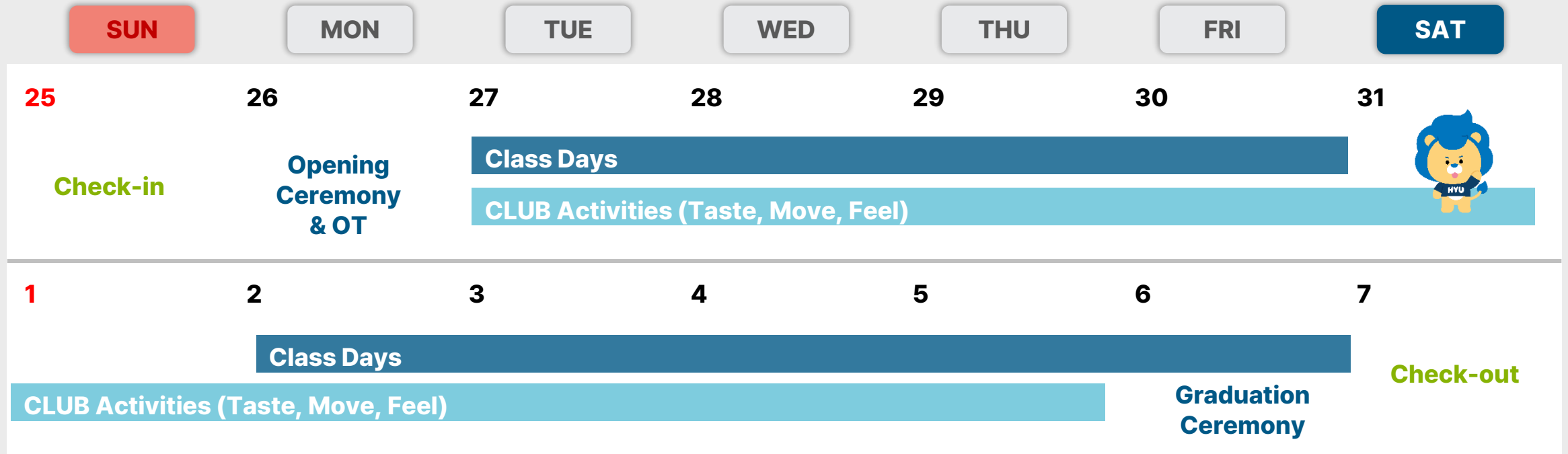
With HIWS's hands-on classes, culture trips, and fun events, the winter becomes your gateway to lifelong friends and a global network.

Session A (Dec 26~Jan 9)



- The schedule is subject to change.
- Please refer to the upcoming slides for more information on club activities.

Session B (Jan 26~Feb 6)



- The schedule is subject to change.
- Please refer to the upcoming slides for more information on club activities.

COURSES (SESSION A)



Academic 9:00 – 15:00

Elective 15:30 – 19:00

***Lunch Break 12:00-13:00**

- Courses are taught from Monday to Friday(9 Class days in total)
- Students can choose up to 2 courses and earn up to 5 credits
- Class hour: 15 hours per 1 credit
- Academic Course: 3 credits / Elective course: 2 credits / Korean Language: 1 credit

Engineering & IT

- AI Ethics and Society
- Engineering and Society
- Heat Transfer
- Creative Computing for Engineering Students(Python)
- Mobile App Programming
- Designing the Future: Creativity with Gen AI
- Numerical Analysis
- Project Management
- International Security

Korean Studies & Language

- Basic Korean (Level 1) (1)
- Korean Grammatical Structure
- Korean Society and Culture
- Korean Wave and Korean Popular Culture
- Korean Architecture and Its Urban Condition

Business & Economics & Design

- Brand Workshop
- International Business
- Introduction to Behavioral Finance
- Introduction to Marketing
- Strategic Management
- Multimedia Marketing and Content Design
- Culture, Content, Creative Industry and Financial Strategies

Mathematics

- Calculus 1
- Engineering Mathematics 1 & 2

E-Sports & Arts & Sports

- Art of Self Defense(Taekwondo) (2)
- Badminton (1)
- Ceramic Practice (2)
- Korean Beauty and Makeup (2)
- Korean Pop Dance (2)
- Pilates (2)
- Weight Training (2)



- Minimum enrollments must be met for each course to be confirmed.
- Some of the courses listed are **tentative and subject to change**.
- Course registration will be proceeded strictly on a first-come, first-served basis.
- More detailed course information and syllabi can be found on hanyangwinter.com.



COURSES (SESSION B)



Academic 9:00 – 15:00

Elective 15:30 – 19:00

***Lunch Break 12:00-13:00**

- Courses are taught from Monday to Friday(9 Class days in total)
- Students can choose up to 2 courses and earn up to 5 credits
- Class hour: 15 hours per 1 credit
- Academic Course: 3 credits / Elective course: 2 credits / Korean Language: 1 credit

Engineering & IT

- Creative Computing for Engineers
- Digital Design Studio
- Mobile App Programming
- Future Design & Technology

Korean Studies & Language

- Basic Korean (Level 1) (1)
- Korean Dystopian Content: From Train to Busan to Parasite
- Korean Society and Culture
- Visual Language of Korean

Business & Economics & Design

- Consumer Behavior
- International Business
- Strategic Management
- Multimedia Marketing and Content Design
- Visual Communication and Merchandising

E-Sports & Arts & Sports

- Art of Self Defense(Taekwondo) (2)
- Badminton (2)
- Ceramic Practice (2)
- Korean Beauty and Makeup (2)
- Korean Pop Dance (2)
- Pilates (2)
- Weight Training (2)



- Minimum enrollments must be met for each course to be confirmed.
- Some of the courses listed are **tentative and subject to change**.
- Course registration will be proceeded strictly on a first-come, first-served basis.
- More detailed course information and syllabi can be found on hanyangwinter.com.

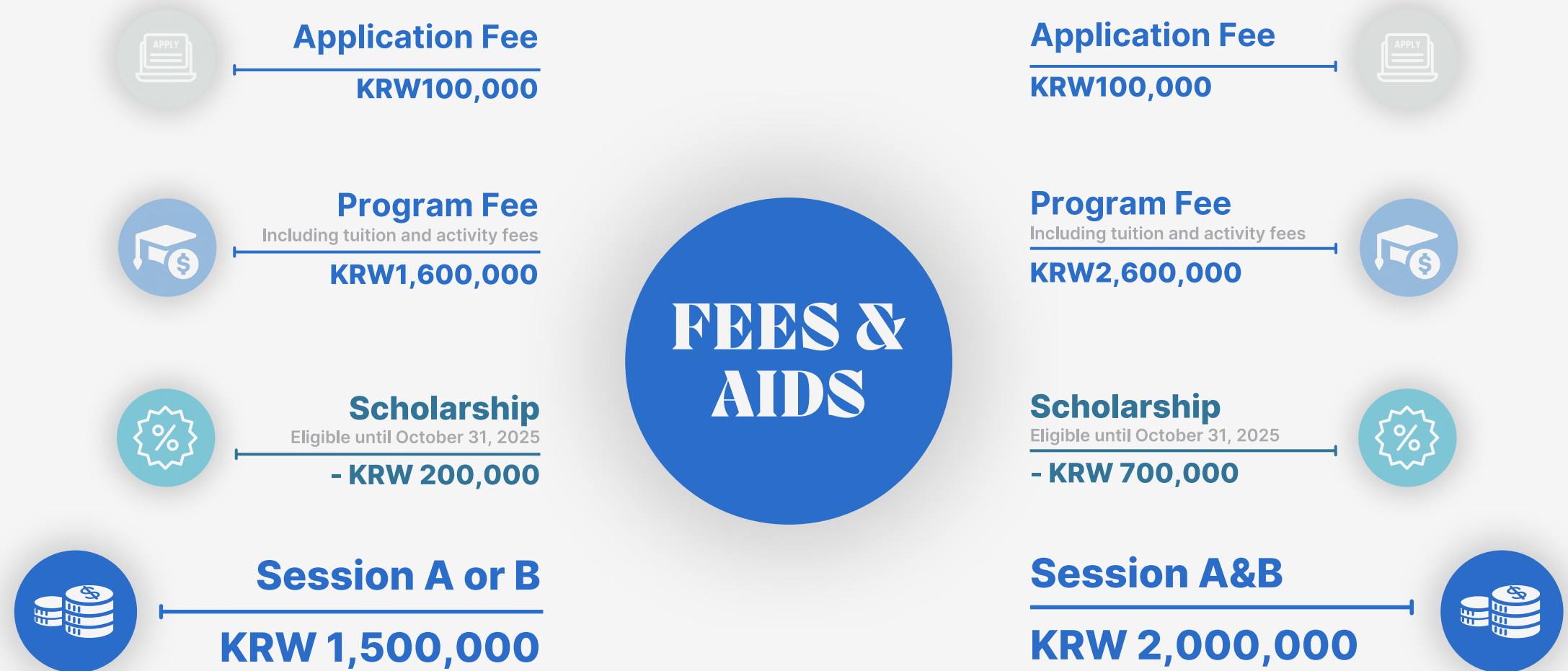






FREE, EVERYDAY AFTER CLASS

FEES & SCHOLARSHIP

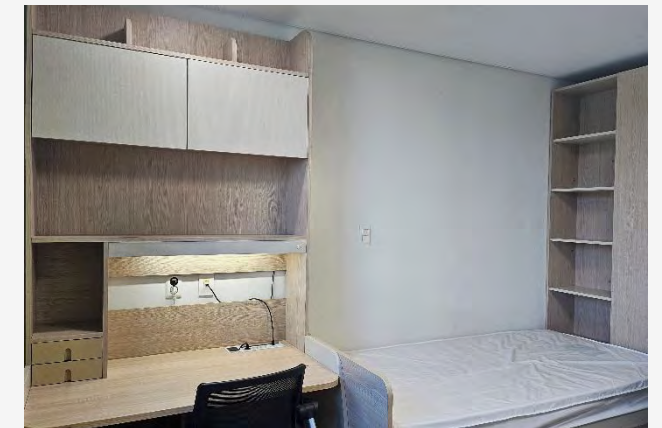


For students from non-partner universities, the tuition fees will revert to the regular amount (KRW 1,700,000 / 2,700,000), effective **November 1st.*

ACCOMMODATIONS

ALL OPTIONS

| Type | Specifications | Fees (KRW) |
|--|--|----------------------|
| On-campus dormitory | <ul style="list-style-type: none">Room type: Twin roomLocation: 15 minutes walk to campus | 300,000 ~ 400,000 |
| Off-campus dormitory: Hanyang Habitat | <ul style="list-style-type: none">Room type: Single room (shared community room)Location: 2 minutes walk to campusEnglish speaking manager available | 450,000 ~550,000 |
| Off-campus dormitory: ENKOR | <ul style="list-style-type: none">Room type: Twin roomLocation: ~20 minutes by subway | 450,000 ~800,000 |



**Rates are subject to change due to inflation and additional charges during the holiday season.*

**More detailed information can be found at hanyangwinter.com*

INSURANCE

International Students

- **International Health/Travel Insurance**
 - Must be written in English.
 - Must submit the full policy of the insurance.
 - Must cover the whole program period.
 - The beneficiary must be the student.

Korean Nationals

- **National Health Insurance(의료보험증)**
 - Must submit the full policy of the insurance.
 - Must cover the whole program period.
 - If you haven't paid for a certain period, you need to resume the payment first.

HISS Group Insurance

- **DB Insurance**
 - You can purchase through the link on the HISS Website.
 - Complete payment through wire transfer.
 - Group Rate: KRW 25,000~30,000

Submission Deadline: 2 Weeks Before Arrival

How to claim medical fees?



Visit the nearby hospital for medical treatment.



Upon payment, request an itemized bill and doctor's note for your treatment.



File a health insurance claim to your insurance company.



VISA

01

Consult Korean Consulate

- Indicate your visiting period and the purpose of the visit.
- Ask for eligible visa types for your visit to Korea.

02

Know Your Visa Type

- **K-ETA (Korea Electronic Travel Authorization)**
 - Required for all nationals coming from visa-free countries/regions.
 - Some nationals may enter Korea with K-ETA but may be restricted for studying purposes. In this case, please apply for the C-3-1 visa below.
- **C-3-1 (Short-term General Visit)**
 - Eligible for individuals intending to visit Korea for a short period to participate in events and meetings or to obtain skills through a Korean organization.
- **D-2-8 (Short-term Study Visa)**
 - Eligible for individuals who intend to study in Korea for a certain period.
 - As D-2-8 is the most complicated visa, please consult the Consulate for C-3-1 or K-ETA before applying for this visa.

03

Request Relevant Documents to HISS Office

- The office can provide the below documents for visa purposes.
 - C-3-1: Certificate of Business Registration, Invitation Letter, Admission Letter
 - D-2-8: Certificate of Enrollment

01

02

03



APPLY NOW

Session A, A&B: 22 Nov, 2025
Session B: 20 Dec, 2025

- Complete an online application with the required documents below.
- A copy of the most recent transcript and passport.



Online Application

Payment

A, A&B: 22 Nov, 2025
B: 20 Dec, 2025

- Paying from overseas: Flywire(credit/debit card)
- Paying within the country: Bank transfer


Upon Payment

- Payment will be checked on a rolling basis.

Admission

Course& Dorm Registration

After Admission

- Both course/dorm registrations are on first-come, first-served basis.
 - Only students who are fully admitted to HISS are eligible for course/dorm registration.
- 



1-MONTH INTERNSHIP

DIFFERENT OPPORTUNITIES

Detailed information: hanyangwinter.com

- Experience work at a Korean Company
- 18+ Fields, Certificate



2-WEEK ONLINE COURSES

- Free, Transcript
- Up to 2 Courses, 6 Credits



DOPAMINE

ONLY WITH HANYANG





HANYANG UNIVERSITY

BEST WINTER EVER HANYANG UNIV.

Office of International Affairs | The HIWS Team

hanyangwinter.com / winterschool@hanyang.ac.kr / +82-2-2220-2453