

Facts & Features

- > 10 Colleges; 67 departments/institutes
- > 420+ partner institutions around the world
- > 1700+ international students / 14,000+ total students
- > The world-renowned **Mandarin Training Center**
- > Bilingual Benchmark Universities designated by the Ministry of Education
- > Collaborate with Nvidia and Gigabyte to build Taiwan's first metaverse motion capture lab



Taipei – 33rd Best Student City

- > High standard of living
- > Excellent transportation systems
- > Rich environment for Chinese culture and language learning

Muslim Friendly Information

Located at Taipei "Most Promising Muslim-friendly City Destination of the Year (non-OIC) 2023"

- > **Prayer facilities** – Main Campus, Gongguan Campus and Linkou Campus
- > **Mosque Nearby (Main Campus)**
Taipei Grand Mosque < 2km
Taipei Cultural Mosque < 2km



Chinese Learning @
Mandarin Training Center
☎ +886-2-7749-5130
✉ mtc@mtc.ntnu.edu.tw



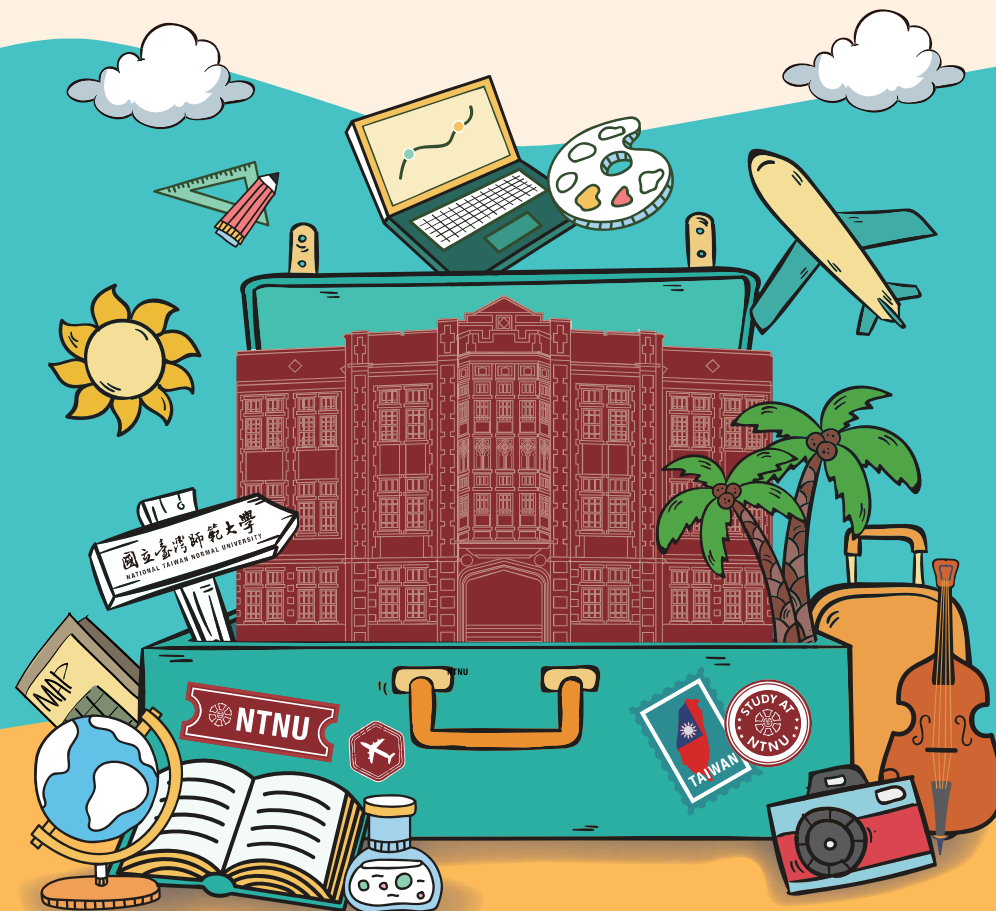
**Academy of Preparatory Programs
for Overseas Chinese Students**
☎ +886-2-7749- 8299
✉ nups@deps.ntnu.edu.tw

Office of International Affairs

- ☎ **International Students** +886-2-7749-1272 🌐 <https://www.ntnu.edu.tw/oia>
- ☎ **Overseas Chinese Students** +886-2-7749-5958 ✉ intlntnu@ntnu.edu.tw

162, Section 1, Heping East Rd., Taipei 10610, Taiwan, R.O.C.

GO STUDY AT NTNU



NATIONAL TAIWAN NORMAL UNIVERSITY

Programs & Degrees

- Available only for International Student, Fall Semester
- ★ Available only for International Student, Fall & Spring Semester
- ☆ Available for Overseas Chinese Student, Fall Semester
- E English Taught Program
- E* Available with enough English courses to meet graduation requirements

Education

	B	M	D
Education	★★	★★	★★E
Educational Psychology & Counseling	★★	★★	★★E
Adult & Continuing Education	★★	★★	★★
Health Promotion & Health Education	★★	◎★E*	◎★E*
Child & Family Science	★★	◎★	◎★E*
Civic Education and Leadership	★★	★★E*	★★E*
Special Education	★★	★★E*	★★E*
Learning Sciences	◎★		
Transdisciplinary in Education	★★E		
Library & Information Studies		◎★E*	◎★E*
Education Policy & Administration	★★		
Rehabilitation Counseling & Gerontological Wellbeing	★★		
Information & Computer Education		◎★E*	◎★E*
Curriculum & Instruction		★★	★★

Liberal Arts

	B	M	D
Chinese	★★	•	•
English	★★E*	◎★E	◎★E
History	★★	★★E*	•
Geography	◎★	◎★E*	◎★E*
Taiwan Culture, Languages & Literature	◎★	◎★E*	◎E*
Translation and Interpretation		★★	•
Taiwan History		◎★	

Science

	B	M	D
Mathematics	★★	◎★E*	◎★E*
Physics	◎★E*	◎★E	◎★E
Chemistry	★★	★★E*	◎★E*
Life Science	★★	◎★E*	◎★E*
Earth Sciences	◎★	◎★E*	◎★E*
Computer Science & Information Engineering	★★	◎★E*	◎★E*
Nutrition Science	★★	◎★E*	
Science Education		◎★E*	◎★E*
Sustainability Management & Environmental Education		◎★E*	◎★E*
Biotechnology & Pharmaceutical Industries		◎★	

Please refer to our admission website for most updated application information & requirements for each department

Arts

	B	M	D
Fine Arts	★★	★★E*	★★
Design	★★	★★E*	•
Art History		◎★E	

Technology & Engineering

	B	M	D
Graphic Arts & Communications	★★	★★	
Industrial Education		◎★	◎★E*
Technology Application & Human Resource Development	★★	★★E*	★★
Mechatronic Engineering	★★	◎★E*	◎★E*
Electrical Engineering	★★	◎★E*	◎★E*
Vehicle & Energy Engineering	★★	★★E*	
Electro-Optical Engineering	◎★	◎★E*	◎★E*
Integrative STEM Education			◎E

Sports & Recreation

	B	M	D
Physical Education & Sports Sciences	★★	★★E*	★★E*
Sport & Kinesiology	★★E*	◎★	
Sport, Leisure & Hospitality Management		◎★E*	◎★E*

Music

	B	M	D
Music	★★	★★E*	★★
Performing Arts	◎★	◎★E*	
Ethnomusicology		◎★	

Management

	B	M	D
Business Administration	★★E*		
Management		◎★E*	
Global Business and Strategy		◎★E*	

International Studies & Social Sciences

	B	M	D
Chinese as a Second Language	◎★	◎★	◎★
East Asian Studies	★★	◎★	★★E*
Global Studies	•E		
Mass Communication		★★	
European Cultures and Tourism		★★E*	
International Human Resource Development		★★E	
Social Work		★★E*	

Interdisciplinary Industry-Academia Innovation

	B	M	D
AI Interdisciplinary Applied Technology		◎	◎
Green Energy and Sustainable Technology		◎	◎

Tuition Fees (per semester)

	International Students		Overseas Chinese Students	
B	NT\$ 47,180–55,200 (US\$ 1,573–1,840)		NT\$ 23,590–27,600 (US\$ 786– 920)	
M & D	Sem 1–4	NT\$ 50,726–56,264 (US\$ 1,691–1,875)	Sem 1–4	NT\$ 21,990–27,220 (US\$ 733– 907)
	Sem 5 onwards	NT\$ 27,794–33,332 (US\$ 926–1,111)	Sem 5 onwards	NT\$ 10,690–12,820 (US\$ 356– 427)

*Fees may be subject to change. Check university announcements for updates. *Exchange rate US\$ 1=NT\$30

Misc Fees (per semester)

Dormitory 2~6 Person Room	NT\$ 5,950–25,930 (US\$ 198–864)
Student Group Insurance	NT\$ 211 (US\$ 7)
Taiwan Health Insurance	NT\$ 2,478–4,956 (US\$ 83–165)
Computer & Internet Usage Fees	NT\$ 500 (US\$ 17)

Scholarships

International Students				Overseas Chinese Students	
NTNU	Full Tuition Waiver			Fulfilling Dream Scholarship	
	B 1 year	M 2 years	D 3 years	NT\$10,000 (US\$ 333) one time stipend	
	Applied through Office of International Affairs			Applied through Office of Student Affairs	
Government agencies & non-NTNU parties	Taiwan Scholarship (MOE & MOFA)			Top & Outstanding Compatriot Students Scholarship	
		B	M	D	By Overseas Community Affairs Council, Taiwan
	Duration	4 years	2 years	4 years	NT\$100,000— NT\$ 260,000 per year
		tuition support up to NT\$40,000			(US\$ 3,332–8,659/month)
	MOE	NT\$ 15,000/ month	NT\$ 20,000/ month	NT\$ 20,000/ month	
	MOFA	NT\$ 33,000/ month	NT\$ 33,000/ month	NT\$ 33,000/ month	
	Please contact the nearest R.O.C. Embassy or Mission abroad for details			More Scholarships	
				By Ministry of Education, Overseas Community Affairs Council, various social foundations, and NTNU's own alumni	
				NT\$ 1,000/time–25,000/month	
				(US\$ 33/time–833/month)	

Application Period

		July	Aug.	Sep.	Oct.	Nov.	Dec.	Jan.	Feb.	Mar.	Apr.	May	Jun.	July	Aug.	Sep.
FALL	International Students															
	Individual Application															
	Admission by Recommendation															
	Individual Application															
	United Distribution															
SPRING	International Students															
	Individual Application															

> *UECOCS

United Entrance Committee for Overseas Chinese Students

> **Overseas Chinese Student

Students of Chinese descent who were born overseas and have had continuous residency overseas until now or have recently resided overseas continuously for six years or more and obtained permanent or long-term residency documents in the country of residence to return to Taiwan for education